

Hospital Profile:

BRIGHAM AND WOMEN'S FAULKNER HOSPITAL

Brigham and Women's Faulkner Hospital (Faulkner Hospital) is a non-profit, acute care teaching hospital. It is among the smaller hospitals in Massachusetts, with 92 staffed beds. It is located in the Metro Boston region and represents 2% of all acute hospital staffed beds in the region. It is a member of the Partners HealthCare system, and a teaching hospital for Tufts University School of Medicine and Harvard Medical School.

PATIENTS One third of all inpatient cases treated at Faulkner Hospital are from West Roxbury, Roslindale, and Hyde Park.

INPATIENT SERVICES Compared with other the teaching hospitals, Faulkner Hospital treated a greater proportion of low to mid-severity cases. In FY12, it accounted for 2% of all inpatient discharges from acute hospitals within the Metro Boston region. Of note, based on its most common FY12 inpatient cases (DRGs), Faulkner Hospital treated 42% of Alcohol & Drug Dependence with Rehab cases, 31% of Opioid Abuse and Dependence cases, and 22% of Mastectomy Procedure cases in Metro Boston.

FINANCIAL PERFORMANCE Faulkner Hospital's total revenue in FY12 was \$198 million. Its FY12 public payer mix was 51%, the lowest among all teaching hospitals. Faulkner Hospital's FY12 inpatient cost[†] per case mix adjusted discharge was \$13,033, approximately 29% higher than the average teaching hospital and the highest among all teaching hospitals. Faulkner Hospital's CY12 average commercial payer price level was at the 74th percentile, the second highest among all teaching hospitals. It earned a surplus of \$4.4 million (2.2% total margin) in FY12, and it had a surplus each year from FY08, except for FY11.

AT A GLANCE

TOTAL STAFFED BEDS: 92, among the smaller acute hospitals

% OCCUPANCY: 100%, highest in cohort (avg. 74%)

TOTAL REVENUE in FY12: \$198 million

PUBLIC PAYER MIX: 51% (Non-DSH* Hospital)

SPECIAL PUBLIC FUNDING: Not Applicable

TAX STATUS: Non-profit

TRAUMA CENTER DESIGNATION: Not Applicable

CY12 COMMERCIAL PAYER PRICE LEVEL: 74th Percentile

CASE MIX INDEX in FY12: 0.80, < cohort avg. (1.01); < statewide (1.06)

INPATIENT:OUTPATIENT REVENUE in FY12: 32%:68%

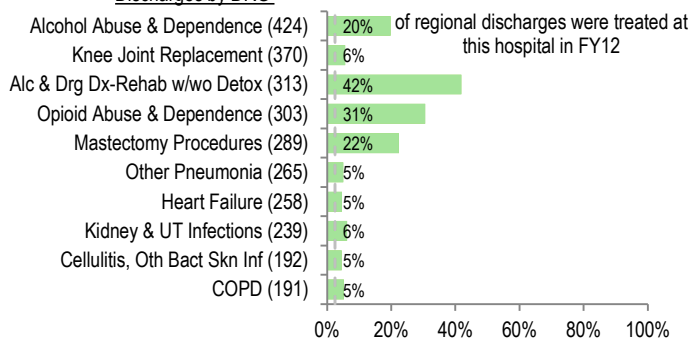
TOTAL MARGIN in FY12: 2.2% (\$4.4 million)

CHANGE in OWNERSHIP (FY08-FY12): Not Applicable

SERVICES

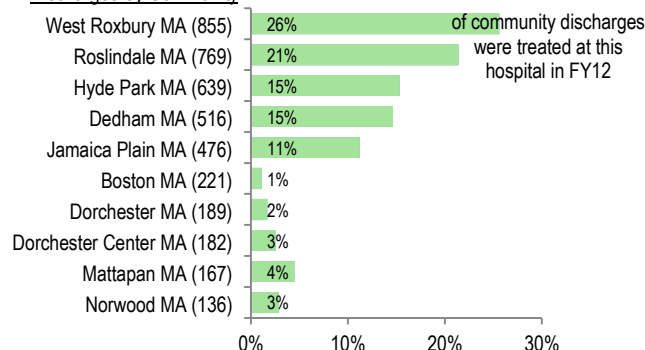
What were the most common inpatient cases (DRGs) treated at the hospital? What proportion of the region's cases did this hospital treat for each service?

Discharges by DRG



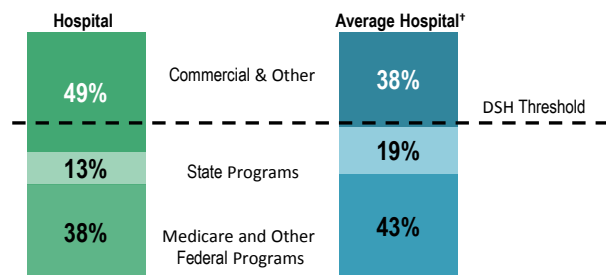
Where did most of the hospital's inpatients reside? What proportion of each community's total discharges were attributed to this hospital?

Discharges by Community



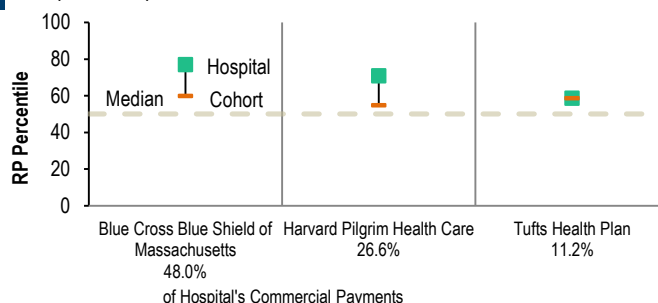
PAYER MIX

What was the hospital's overall payer mix (gross charges) in FY12, and how does this hospital compare to the average acute hospital's payer mix?



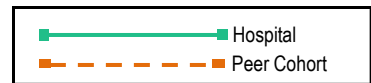
Percentage calculations may not sum to 100% due to rounding

What were the hospital's CY12 payer-specific relative price levels for its top three commercial payers? How does this hospital compare to the average hospital in its peer cohort?



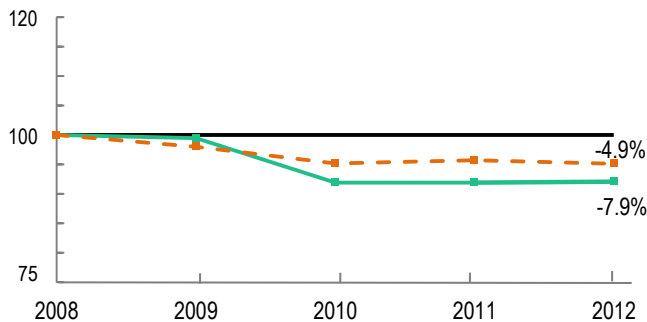
of Hospital's Commercial Payments

For descriptions of the metrics, please see Technical Appendix.

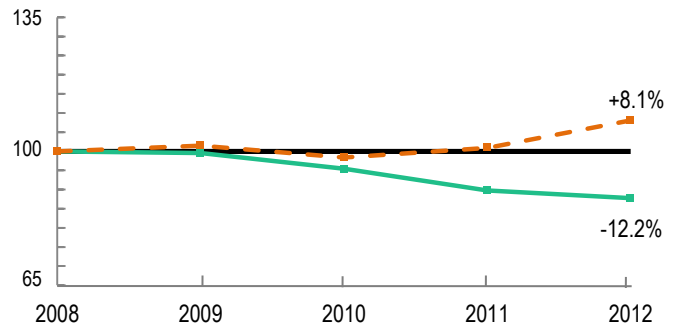


UTILIZATION TRENDS

How has the volume of the hospital's inpatient discharges changed compared to FY08, and how does this hospital compare to the average hospital in its peer cohort? (FY08=100)

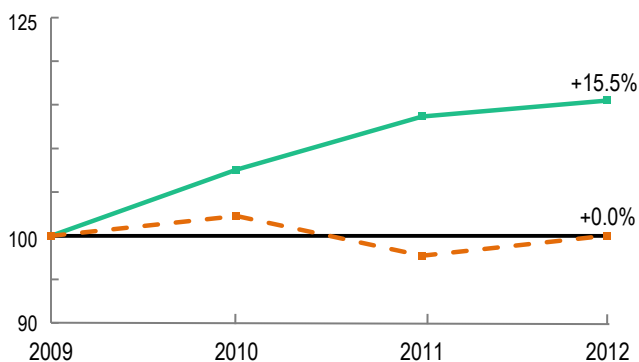


How has the volume of the hospital's outpatient visits changed compared to FY08, and how does this hospital compare to the average hospital in its peer cohort? (FY08=100)

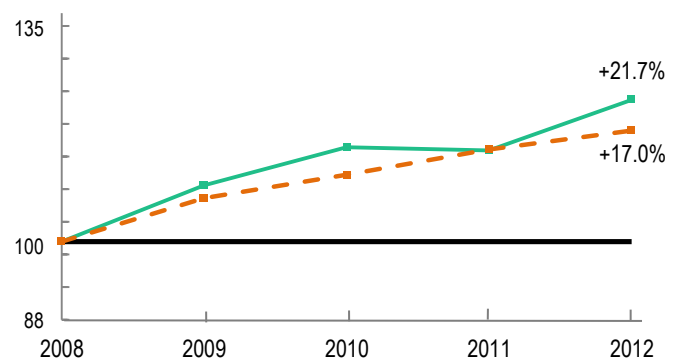


COST TRENDS

How has the hospital's inpatient cost[†] per case mix adjusted discharge changed compared to FY09, and how does this hospital compare to the average hospital in its peer cohort? (FY09=100)



How have the hospital's total outpatient costs changed compared to FY08, and how does this hospital compare to the average hospital in its peer cohort? (FY08=100)

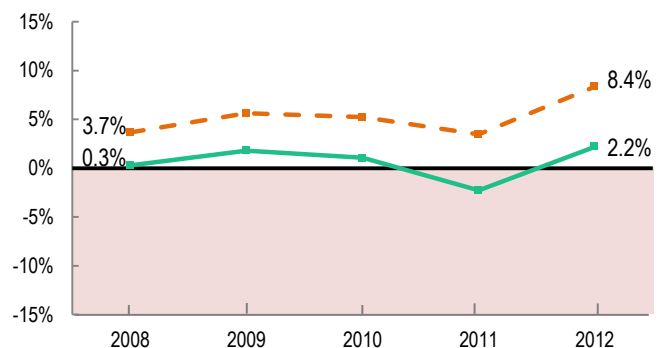


FINANCIAL PERFORMANCE

How have the hospital's total revenue and costs changed between FY08 and FY12?

Revenue, Cost & Profit/Loss (in millions)					
FY	Total Revenue	% Change	Total Cost	% Change	Total Profit/Loss
2008	\$172		\$172		\$0.5
2009	\$180	4.9%	\$177	3.3%	\$3.2
2010	\$183	1.5%	\$181	2.3%	\$1.9
2011	\$181	(1.0%)	\$186	2.4%	(\$4.1)
2012	\$198	9.3%	\$194	4.5%	\$4.4

What was the hospital's total margin between FY08 and FY12, and how does this compare to the median of its peer cohort hospitals?



For descriptions of the metrics, please see Technical Appendix.

[†] Costs were adjusted to exclude direct medical education costs and physician compensation.

* Disproportionate Share Hospitals (DSH) receive a minimum of 63% of gross patient service revenue from public payers.

† Average Hospital does not include Specialty hospitals.

For more information, please contact:

CENTER FOR HEALTH INFORMATION AND ANALYSIS
Two Boylston Street, 5th Floor
Boston, MA 02116

617.988.3100



www.mass.gov/chia/hospitals