

# Hospital Profile: QUINCY MEDICAL CENTER

Quincy, MA  
Steward Health Care System  
Community, Disproportionate Share Hospital  
South Shore Region

Quincy Medical Center is a for-profit, acute care community hospital. It is among the smaller hospitals in Massachusetts, with 93 staffed beds. It is located in the South Shore region and represents 15% of all acute hospital staffed beds in the region. It is a member of the Steward Health Care System. Quincy Medical Center qualifies as a Disproportionate Share Hospital (DSH), as more than 63% of its gross patient service revenue is derived from government programs.

**PATIENTS** Sixty percent of all inpatient cases treated at Quincy Medical Center are from Quincy.

**INPATIENT SERVICES** Compared with other community-DSH hospitals, Quincy Medical Center treats a greater proportion of mid to higher-severity cases. In FY12, it accounted for 13% of all inpatient discharges from acute hospitals within the South Shore region. Of note, based on its most common FY12 inpatient cases (DRGs), it treated 46% of all Pulmonary Edema & Respiratory Failure cases, 32% of all Alcohol Abuse and Dependence cases, and 27% of all Knee Joint Replacement cases in the South Shore.

**FINANCIAL PERFORMANCE** Quincy Medical Center's total revenue in FY12 was \$99 million. Its FY12 public payer mix was 68%, equal to the average community-DSH hospital. Its FY12 inpatient cost<sup>†</sup> per case mix adjusted discharge was \$8,310, which was approximately 12% lower than the average community-DSH hospital. The CY12 average commercial payer price level was at the 19<sup>th</sup> percentile, the third lowest of all community-DSH hospitals. It had a loss of \$5.4 million (-5.5% total margin) in FY12, and it had a loss each year in the FY08 to FY12 period.

## AT A GLANCE

**TOTAL STAFFED BEDS:** 93, among the smaller acute hospitals

**% OCCUPANCY:** 77%, > cohort avg. (61%)

**TOTAL REVENUE in FY12:** \$99 million

**PUBLIC PAYER MIX:** 68% (DSH\* Hospital)

**SPECIAL PUBLIC FUNDING:** ICB<sup>9</sup>

**TAX STATUS:** For profit

**TRAUMA CENTER DESIGNATION:** Not Applicable

**CY12 COMMERCIAL PAYER PRICE LEVEL:** 19th Percentile

**CASE MIX INDEX in FY12:** 0.95, > cohort avg. (0.89); < statewide (1.06)

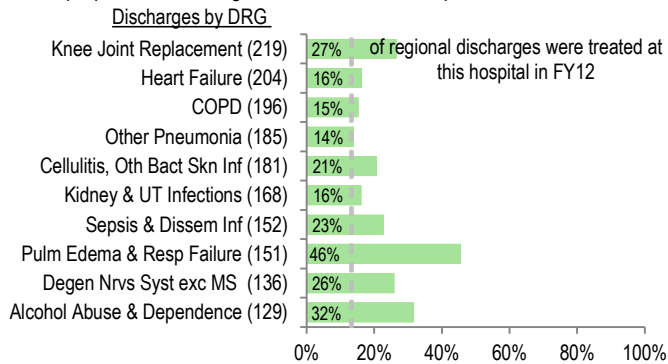
**INPATIENT:OUTPATIENT REVENUE in FY12:** 43%:57%

**TOTAL MARGIN in FY12:** -5.5% (-\$5.4 million)

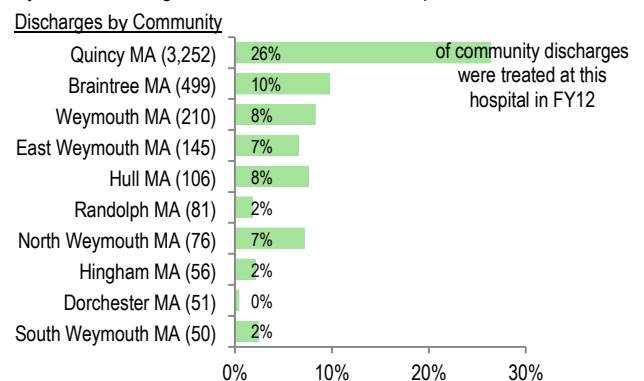
**CHANGE in OWNERSHIP (FY08-FY12):** Steward Health Care - 2011

## SERVICES

What were the most common inpatient cases (DRGs) treated at the hospital? What proportion of the region's cases did this hospital treat for each service?

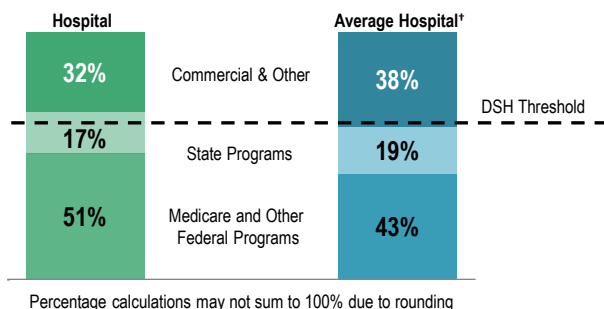


Where did most of the hospital's inpatients reside? What proportion of each community's total discharges were attributed to this hospital?

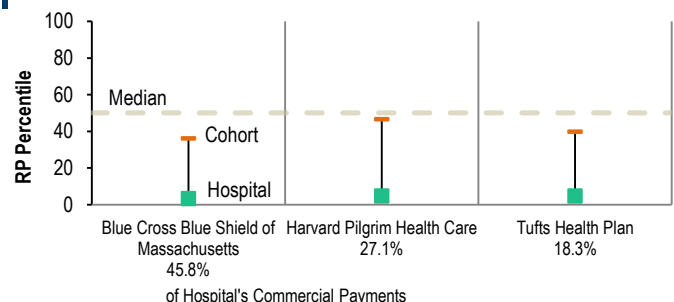


## PAYER MIX

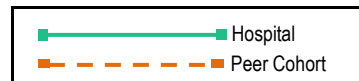
What was the hospital's overall payer mix (gross charges) in FY12, and how does this hospital compare to the average acute hospital's payer mix?



What were the hospital's CY12 payer-specific relative price levels for its top three commercial payers? How does this hospital compare to the average hospital in its peer cohort?

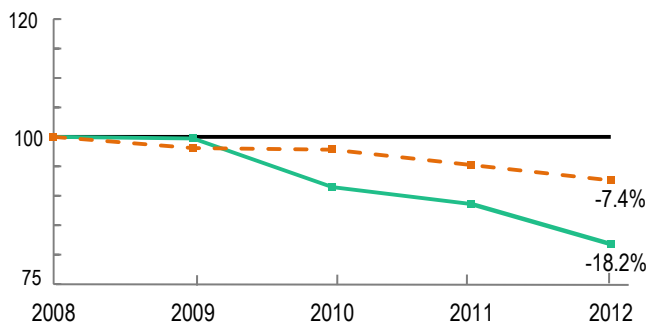


For descriptions of the metrics, please see Technical Appendix.

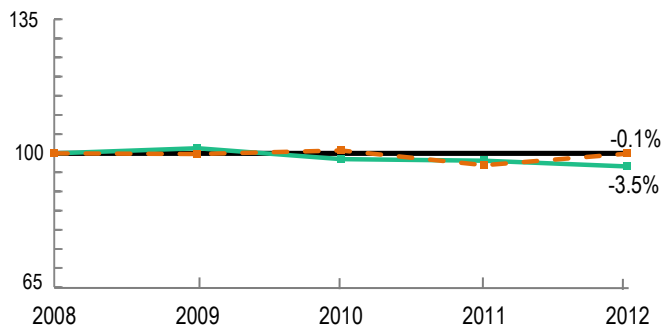


**UTILIZATION TRENDS**

How has the volume of the hospital's inpatient discharges changed compared to FY08, and how does this hospital compare to the average hospital in its peer cohort? (FY08=100)

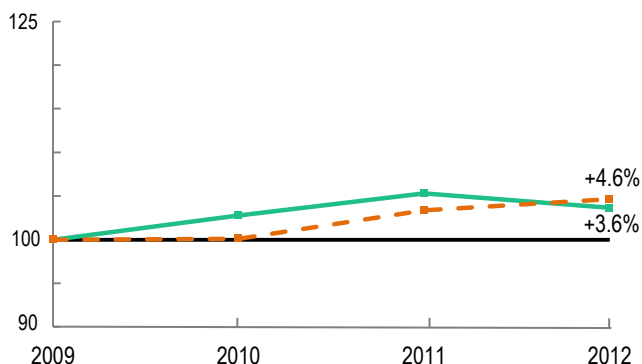


How has the volume of the hospital's outpatient visits changed compared to FY08, and how does this hospital compare to the average hospital in its peer cohort? (FY08=100)

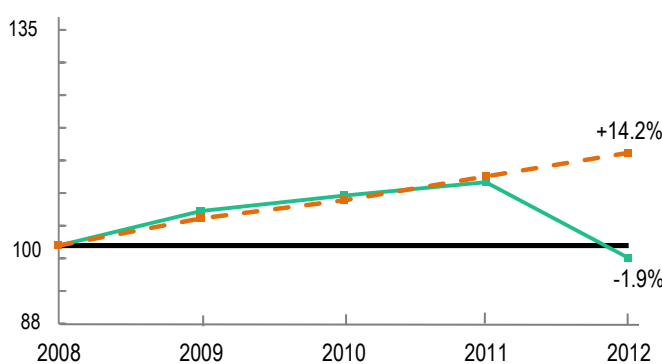


**COST TRENDS**

How has the hospital's inpatient cost<sup>‡</sup> per case mix adjusted discharge changed compared to FY09, and how does this hospital compare to the average hospital in its peer cohort? (FY09=100)



How have the hospital's total outpatient costs changed compared to FY08, and how does this hospital compare to the average hospital in its peer cohort? (FY08=100)

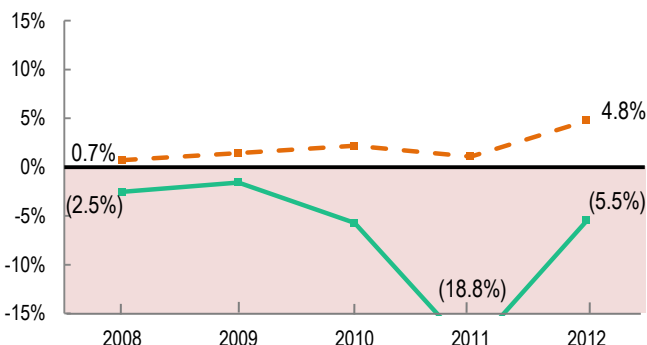


**FINANCIAL PERFORMANCE**

How have the hospital's total revenue and costs changed between FY08 and FY12?

Revenue, Cost & Profit/Loss (in millions)					
FY	Total Revenue	% Change	Total Cost	% Change	Total Profit/Loss
2008	\$105		\$108		(\$2.7)
2009	\$110	4.4%	\$112	3.5%	(\$1.8)
2010	\$104	(5.9%)	\$109	(2.1%)	(\$5.9)
2011	\$99	(4.8%)	\$117	7.0%	(\$18.5)
2012	\$99	0.2%	\$104	(11.1%)	(\$5.4)

What was the hospital's total margin between FY08 and FY12, and how does this compare to the median of its peer cohort hospitals?



For descriptions of the metrics, please see Technical Appendix.

<sup>‡</sup> Costs were adjusted to exclude direct medical education costs and physician compensation.

<sup>\*</sup> Disproportionate Share Hospitals (DSH) receive a minimum of 63% of gross patient service revenue from public payers.

<sup>§</sup> For more information on Infrastructure and Capacity Building (ICB) special funding, please contact the Massachusetts Executive Office of Health and Human Services (EOHHS).

<sup>†</sup> Average Hospital does not include Specialty hospitals.

For more information, please contact:

**CENTER FOR HEALTH INFORMATION AND ANALYSIS**  
Two Boylston Street, 5<sup>th</sup> Floor  
Boston, MA 02116

617.988.3100



[www.mass.gov/chia/hospitals](http://www.mass.gov/chia/hospitals)